

tekom Jahrestagung 2009

INF 1

Besser und schneller?

Herausforderungen, Lösungsansätze und
Ergebnisse auf dem Weg zu xml und cms

Ein Vortrag von Kristin Dittrich-Kahl (Roche) und Ralf Klossek (commatec)

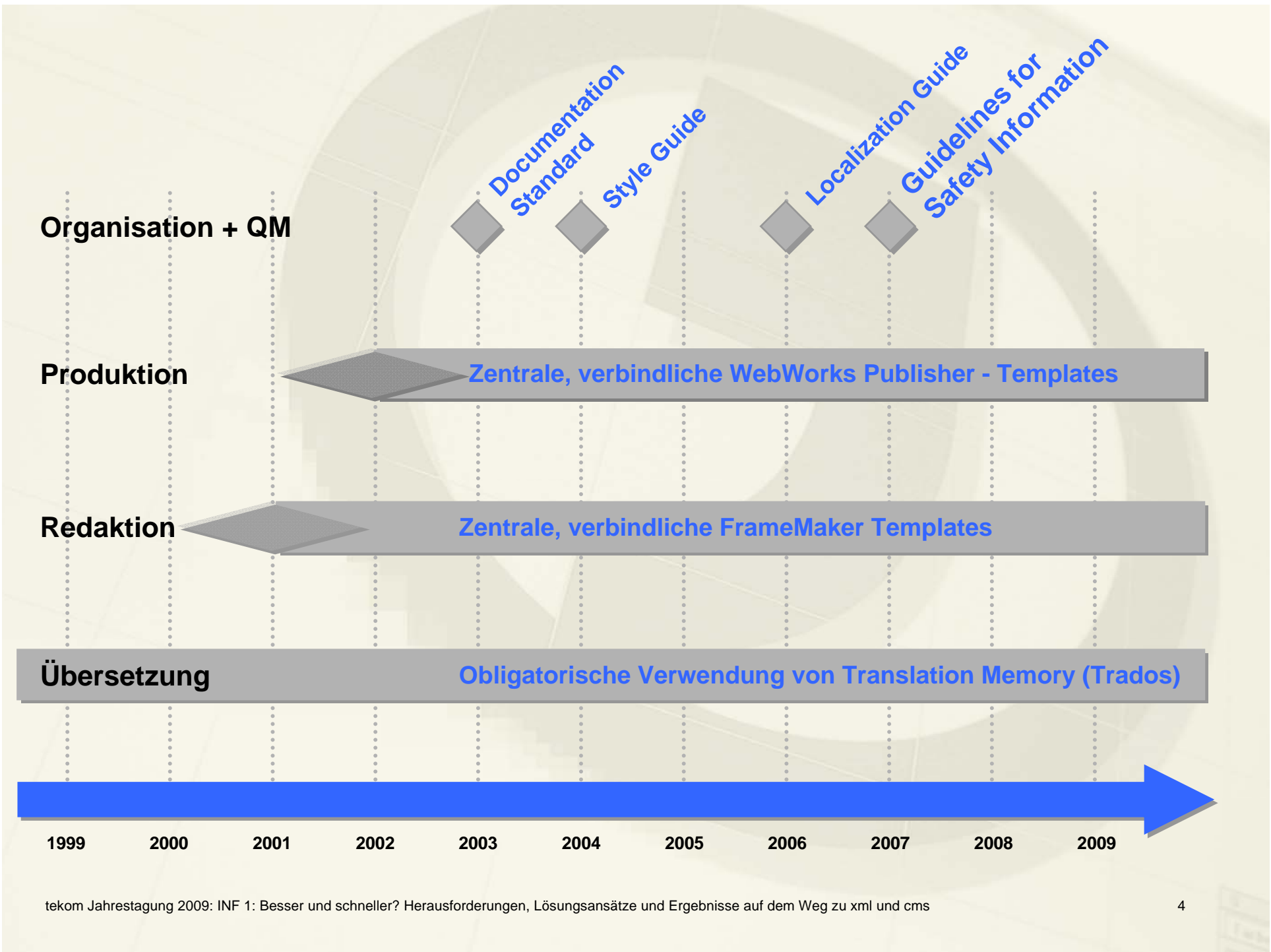


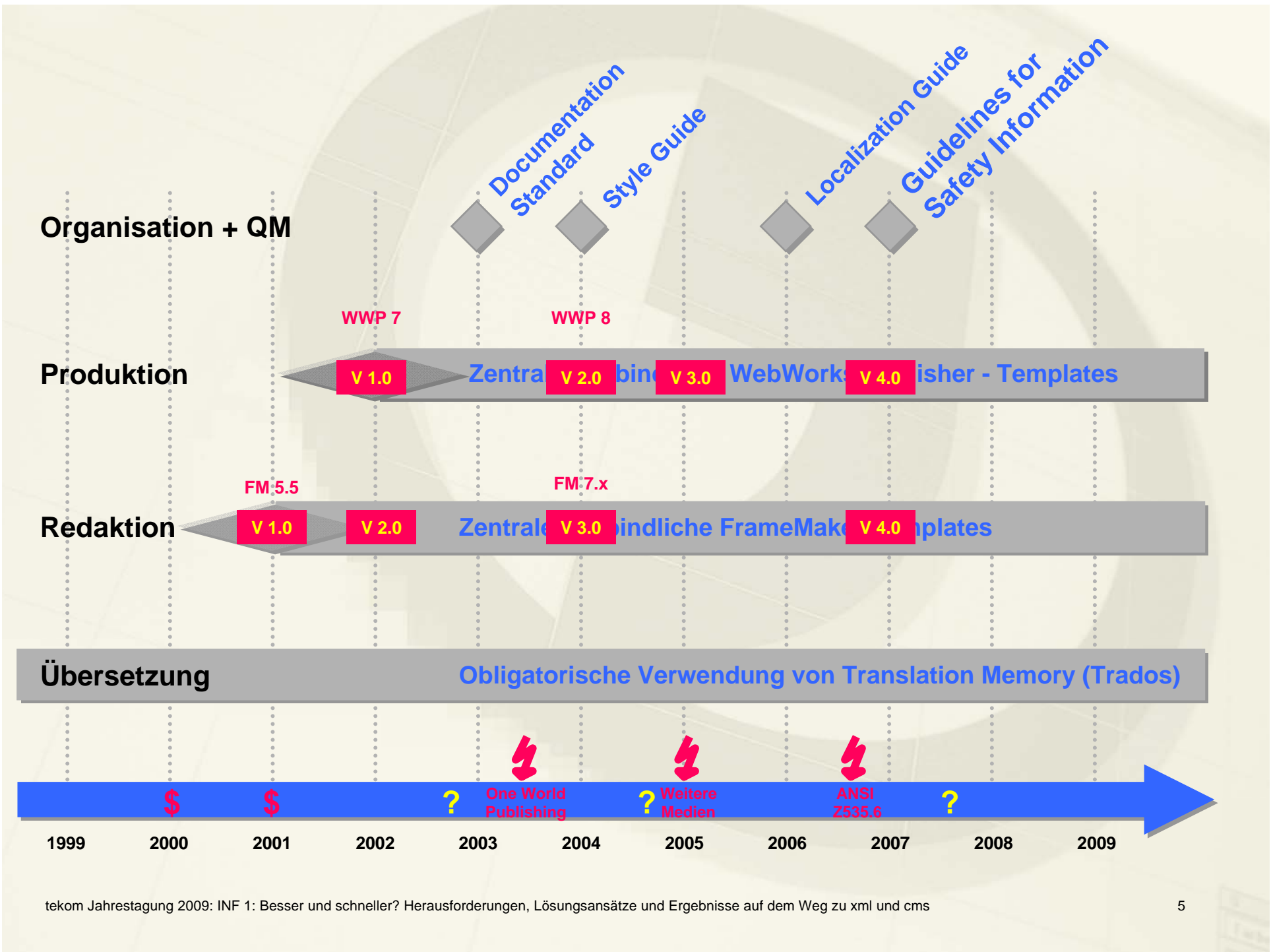
The image displays a collection of technical documents and software help files for the Roche Diagnostics cobas 6000 analyzer series. The documents are arranged in a collage, showing various sections such as:

- Auto Calibration:** Instructions on how to perform auto calibration and the importance of the calibration process.
- Software Update:** Steps for updating the software of the analyzer.
- Maintenance:** Detailed instructions for performing various maintenance tasks, including reagent replacement and cleaning.
- Troubleshooting:** Procedures for identifying and resolving common issues with the analyzer.

The software screenshots show the 'cobas 6000' help interface, which includes a navigation tree on the left and content on the right. The content includes:

- Safety information:** A warning to observe safety precautions before performing maintenance, such as avoiding contact with sample or waste solutions.
- c 501 - ISE unit:** Information about the ISE reagent bottles, including how to check the liquid level and when to replace the bottle.
- Video player:** A video showing a person performing maintenance on the analyzer, with a play button and a progress bar.





tekom Jahrestagung 2009

INF 1

Fazit

Immer eins nach dem anderen

Ein Vortrag von Kristin Dittrich-Kahl (Roche) und Ralf Klossek (commatec)